

essential

THE UK'S NUMBER 1 APRIL 2015

KITCHEN

BATHROOM BEDROOM

ESSENTIAL
GUIDE
KITCHEN
SEATING

*let in the
light*

40+ PAGES
NEW KITCHEN
EXTENSION IDEAS

Bright ideas
Choose the right
bedroom lighting

**TOP 10
TRENDS
IN BATHROOMS**

DESIGNER Q&A
Kit Kemp, Toni Chi & more



INTERIOR DESIGNER Bathroom

Internationally renowned designer Tony Chi creates opulence and luxury in this lavish private suite at London's Rosewood hotel

PICTURES GARETH GARDNER | WORDS AMELIA THORPE

As the traffic zooms by in busy Holborn, grand gates swing open to a little piece of calm: the Rosewood London hotel. Built as the headquarters of the Pearl Assurance Company, the Grade II building dates back to 1914, and still features a magnificent Pavonazzo marble staircase which rises up through all seven storeys of the hotel beneath its 166ft cupola.

The entire building has been recently refurbished by internationally renowned designer Tony Chi and Associates to become this luxurious hotel. It is the only hotel wing in the world to have its own postcode and nestled here is the Manor House suite, a private sanctuary including sitting room, dining room, library, master bedroom and Italian marble bathroom.

'The Edwardian architecture of the building is stunning and dramatic and we wanted to mirror that throughout the interiors,' explains Tony. The drama of this bathroom is first evident from the master bedroom, which reveals a glimpse of the grand Calacatta Oro marble bath, taking centre stage.

Marble steps lead into a black lacquer and mirror-clad entrance and to the sanctuary beyond. 'The bathroom reflects the identity of the building,' he says. 'I like to bring a sense of design that is also 'invisible' and subconscious – what you feel and sense – to deepen your experience of the space,' he says.

It's true: within the quiet of these gently lit, marble-clad walls, the mood is luxuriously peaceful and the roar of London traffic a million miles away. **ekbb**



Tony Chi

TONY CHI & ASSOCIATES

Head of his New York-based interior design practice, Tony Chi has an internationally outstanding reputation for the elegance and sophistication of his hotel and restaurant interiors around the globe. tonychi.com



Left The grand Edwardian entrance to Rosewood London
Below Lacquer walls, marble and mirror combine to create a stunning finish

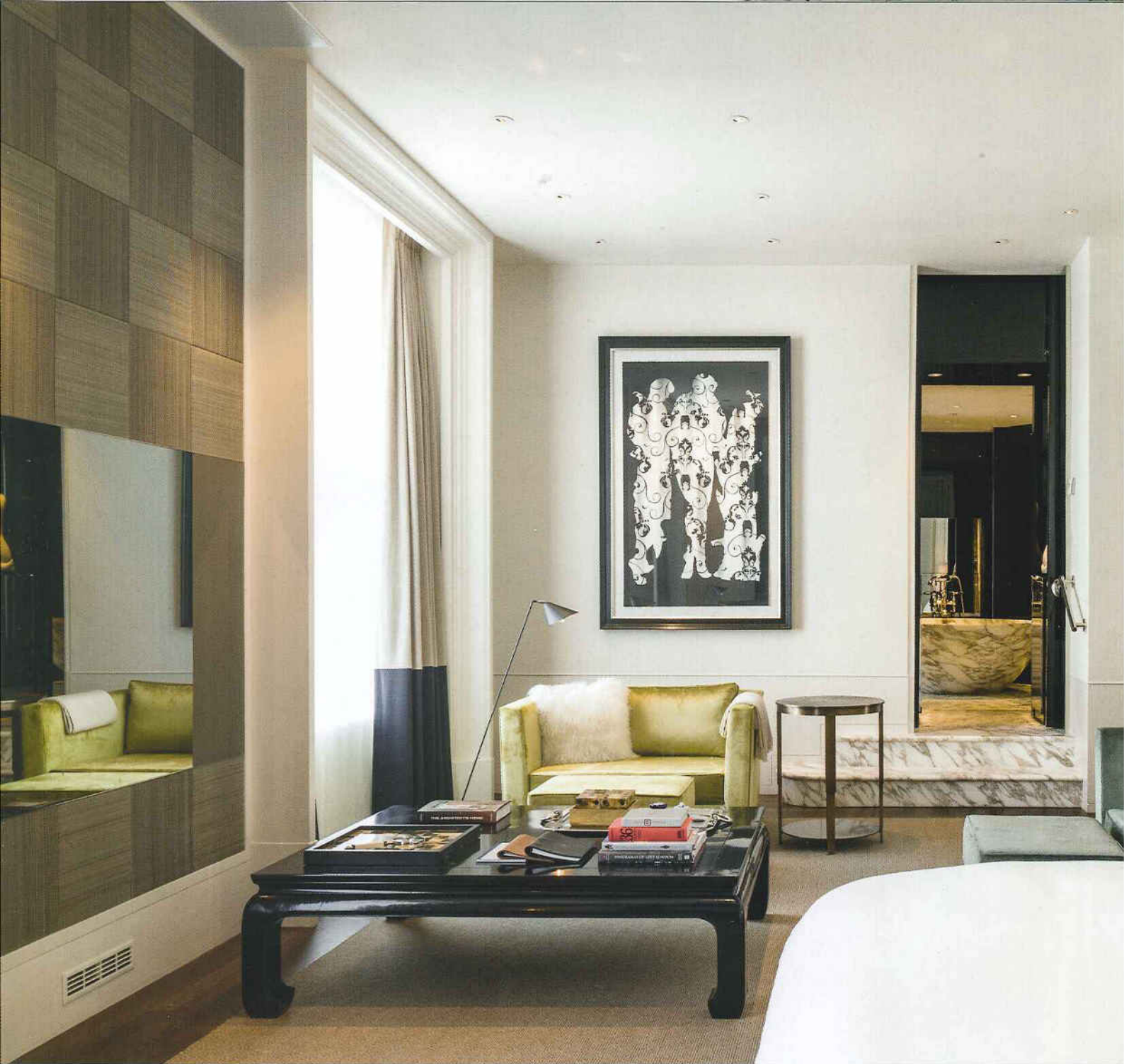
PROJECT DETAILS

MARBLE BATH Similar bespoke Calacatta Oro from £28,104, Calacatta **MARBLE WALL AND FLOOR CLADDING** from £564 per sq. m **VANITY CHESTS** Similar bespoke marble-clad from Simon Orrell Designs **DRAWERS** in shagreen, priced to order, De Ferranti **BASINS** Normandy Octagonal in hammered copper with polished nickel finish, £3,710 each, Waterworks **SHOWER MIXER** BL1144 Classic black lever bath with standpipes, from £1,217; **BASIN MIXER** BL 1220 Classic black lever three-hole, from £384 each; **THERMOSTATIC VALVE** BL 8801 Archipelago and black lever flow control, from £800; **BLACK HANDSET** BK 1727 Classic **RAIL AND HOSE** from £292; **SHOWER ROSE** LB 1774 Classic 8" from £244; **PAPER HOLDER** LB4945 Edwardian dog bone from £86, all by Lefroy Brooks from Original Bathrooms **WASHLET** Neorest LE including installation frame, remote control and flush push plate, £9,142, Toto **DOOR PANELS** Verre églomisé priced to order, Lisa Stimpson **WALL PANELS** finished in black lacquer were produced by the hotel construction company. Try a local joinery company for similar **FLOOR TILES** Similar Carrara honed marble hexagon mosaic, £166 per sq. m, Mandarin Stone **WALL LIGHTS** from a selection, Chelsom

**MASTER
STROKE**

The deep, circular tub, hewn from a single block of beautiful Calacatta Oro marble, takes centre stage in the master bathroom of the luxurious Manor House suite





SWEPT AWAY

Near right A Verre églomisé door opens to the Toto Neorest washlet, with its sensor-based lid that opens and closes automatically. It also has a heated seat, and well as remote controlled shower and dryer technology

TOUCH TECHNOLOGY

Middle The remote control panel for the Toto Neorest washlet offers the ultimate in private comfort

IN THE BLACK

Far right Classic fittings by Lefroy Brooks feature black porcelain detailing



LUXE APPEAL

The 185 square metre suite includes this handsome bedroom leading on to the grand master bathroom, as well as spacious sitting room, dining room and library, all designed by Tony Chi



FINE FINISHES

The dressing chambers each feature a marble-clad vanity chest with drawers finished in shagreen leather with nickel detailing



'It is fun, entertaining, extravagant, luxurious and comforting, all senses as you wander from room to room'



Q&A

How did you begin the project? The challenges of Rosewood London were also its advantages. Because of the heritage and history of the

building, there was a great variation in the configuration of the guest rooms and suites. Typically, this would be seen as a great budget and material challenge. However, it was an opportunity to create an enriching experience for guests, unique to Rosewood London, and now each suite has a different design story.

Can you tell us about the design?

The Manor House suite is fun, entertaining, unashamedly extravagant, luxurious and comforting, all sensed as you wander from room to room. Two large feminine stone statues greet

you upon the bathroom entrance, then you step inside for the full decadence of the bathing experience. The bath is the centrepiece, set in front of black lacquer, marble-framed walls, with His and Her dressing chambers on both sides. Two rooms, opposite the dressing chambers, house a private WC and spacious shower. It is the ultimate in luxury living.

And the materials? Each of the materials was chosen for its exquisite craftsmanship, from the marble bath and honed Carrara marble hexagonal mosaic floor to the beaten copper basins, bevelled mirrors and dark shagreen drawers of the His and Her vanity chests. The doors to the private shower and WC rooms are made of Verre églomisé by artist Lisa Stimpson. They add a very beautiful, opulent and elegant finishing touch.